

Carefully read the entire user's manual before using the device and understand the safety measures and detailed operating instructions for the device. Store the user's manual in a safe place for future reference.

If you sell the device do not forget to provide the user's manual to the new owner together with the device and its accessories.

## Important safety measures

### IMPORTANT!!!

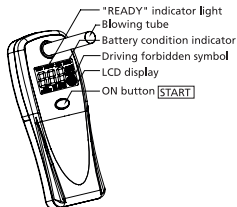
Using the breathalyser immediately after or within 15 minutes of consuming alcohol may damage the detection sensor and there is a danger of future measurements being inaccurate. Unprofessional operation of this device is not covered by the warranty.

- Do not perform tests in strong winds or in a closed room, which is filled with cigarette smoke or contains alcohol vapours.
- If the flat batteries symbol appears on the display, replace them with new ones.
- Do not blow smoke, food or liquids into the mouthpiece.
- Use the device only in an environment where temperatures are between +10 and +40 °C. Use in an environment outside this range may damage the device and may lead to incorrect test results.
- The level of alcohol in the breath depends on many factors that change in time. The level can change already several minutes after the initial test.
- The measurement results of this device cannot be used in legal proceedings as evidence.
- The information obtained using this device is only informative in nature. We recommend that it is not used for making decisions about the ability to perform any activity requiring responsibility. Several factors (e.g. natural gas remains, smoke and undesirable breath) may influence the level of the measured values.
- Do not allow yourself or anybody else to drive a vehicle after consuming alcohol. If you have consumed alcohol always organise for a designated driver or use an alternative form of transport.
- Neither the vendor nor the manufacturer are responsible for damages caused by the use of this device.

**NEVER DRINK ALCOHOL IF YOU ARE PLANNING TO DRIVE A MOTOR VEHICLE!!!**

**Attention:** It is recommended to have the accuracy of the device tested after a year of use. With more frequent use the lifetime of the device may be used up and the measurement results may not be accurate.

## Description of the device



## Battery Installation

1. Remove the battery compartment cover.
2. Insert two AAA alkaline batteries according to the polarity shown in the battery compartment.
3. Return the cover back to its place.
4. After inserting batteries the auto-cleaning process will automatically commence. The auto-cleaning indicator will start to flash and the display will countdown the time.
5. You will be able to use the device after the auto-cleaning function is completed.

## Note:

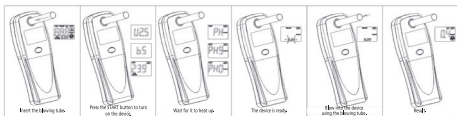
Remove the batteries if you will be storing the device or not using it for an extended period of time.

Batteries must not be exposed to excessive heat such as sunlight, fire, etc. The incorrect use of batteries may lead to an electrolyte leak and corrosion. To ensure that the device works correctly, proceed according to the instructions below:

- Do not insert the batteries in the wrong direction.
- Do not charge, heat, open or short the batteries.
- Do not throw batteries into a fire.
- Do not leave discharged batteries in the device.
- Do not combine various types of batteries or new and old batteries.
- If you will not be using the device for a longer period of time, remove the batteries to prevent potential damage caused by a subsequent battery leakage.
- If the device is not working correctly or its efficiency is reduced, change all batteries for new ones.
- If electrolyte leaks out from the batteries, have the device cleaned by an authorised service centre.

## Application

1. It is important to rinse your mouth with clean water before use. Do not smoke or drink alcoholic beverages for at least 5 minutes before use.
2. Insert a straw or the blowing tube into the inlet opening above the LCD display.
3. Press the START button for a short time to turn on the device. The preheat sensor is activated for a period of approximately 18 seconds. "PH" will blink once on the display and then the display will show "Wait" and a countdown will commence.



## Important

Wait until the preheating process is completed because the sensor needs to heat up.

As soon as the countdown is completed the display will show "READY" and a sound will be made, informing you that the device is ready for operation. At the same time the "BLOW" indicator light will start to flash on the display, informing the user that it is necessary to blow into the tube.

4. Press and hold the START button and the "BLOW" will light up and you will hear a long sound signal. It is necessary to blow into the tube at the same time. It is necessary to blow into the tube with a constant force for approximately 6 seconds.
  - Stop blowing as soon as you hear a short sound signal. The display will show the appropriate information.
  - i. A measured value lower than 0.1 ‰ BAC will be displayed as "0.0" (low value).
  - ii. A measured value between 0.1 ‰ – 4 ‰ BAC will appear on the display.
  - iii. A measured value larger than 4 ‰ BAC will cause "HI" (high value) & "NO DRIVING" (Driving forbidden) to appear on the display.
5. Press the START button for a short time to start another test. You may use the device again as soon as the countdown is completed and the "READY" indicator appears on the display together with a sound signal.
6. Press the START button for approximately 2 seconds to turn off the device. The device will turn itself off automatically if you do not press any button within 2 minutes.

## Warning signals

Low value	A measured value lower than 0.1‰ BAC will be displayed as "0,0" (low value) with a GREEN backlight.
Warning value	<p>The measured value equals or is greater than the warning concentrated value. A sound signal will be made and "NO DRIVING" (driving forbidden) will start flashing on the screen for about 15 seconds. The display's backlight will alternate colours – GREEN AND RED. The measured value will be shown and a message "NO DRIVING (driving forbidden) will stay lit on the display. If the measured value is greater than 4 ‰, "NO DRIVING" (Driving forbidden) and "HI" (high value) will appear on the display. Press the MODE button to cancel the sound signal.</p> <p><b>IT IS FORBIDDEN TO DRIVE if the low warning value is exceeded.</b></p>

## Important notices

- To ensure accurate measurement results it is necessary to perform so-called auto-cleaning if you have not used the device for longer than 2 weeks (especially before first use). Start the auto-cleaning process by removing the batteries and reinserting them and turning on the device. The indicator "AUTO CLEANING" will start to flash. The auto-cleaning process takes approximately 5 minutes and there will be a countdown on the display for during this time. A sound signal will be made in the final minute of the auto-cleaning. The device will automatically turns itself off after 1 minute and the auto-cleaning process will be completed. Check that no residual alcohol has remained inside the space for blowing tube before performing a test.
- If you press the START button for approximately 2 seconds you will end the auto-cleaning process and turn off the device. Or press the START button for a short time to start measurement and to skip the auto-cleaning function.
- To achieve accurate measurements you should check that there is no residual alcohol in the device before using the device. You can inspect the device until "LO" (low value) appears on the display. You can achieve this by pressing the START button once. **Press and hold** the START button for several seconds and blow into the blowing tube. If necessary you may shake the device back and forward several times, which may remove residual alcohol from the device.
- After 4 repeated tests let the device rest for 2 minutes.
- If the message "Er" flashes on the display for longer than 5 seconds, it may indicate incorrect handling:
  - You did not press and hold the START button during the test.
  - Press any button to end the error sound signal.
- If you will not be using the device store it in a dry place.
- If the low battery condition indicator light starts flashing, the measurement is not accurate and it is necessary to replace the batteries without delay.
- If the difference between two subsequent measurements is greater than 0.1%, you must repeat the measurement.

## Technical specifications

Measuring range	0.1 - 4 ‰
Battery	2 x 1.5V AAA alkaline batteries
Display	Digital LCD display with a two colour backlight
Unit	‰ (or ‰BAC or mg/l; optional)
Automatic shut off	2 minutes
Duration of test	≥ 6 seconds
Test preparation time	25 seconds
Dimensions (h x w x d)	98 x 36 x 16 mm
Weight	Approx. 27 g (without batteries)
Warning calibration value	0.2 ‰
Accessories	3 blowing tubes

The above stated data may be changed without giving reason.

**Do not forget**, that the measured value may be affected by many factors such as gas pollution in the air, smoke and various mouth odours. Therefore consider the measured value only as informative in nature. Neither the manufacturer nor the vendor take any responsibility arising from the use of this device.

**Caution!** Using the breathalyser immediately after or within 15 minutes of consuming alcoholic beverages may damage the detection sensor, there is a danger of future measurements being inaccurate. Unprofessional operation of this device is not covered by the warranty.



### Disposal of used batteries

Take used batteries to designated collection points. Follow the regulation in force in your country.

## INSTRUCTIONS AND INFORMATION REGARDING THE DISPOSAL OF USED PACKAGING MATERIALS

Take the packaging material to a designated municipal waste facility.

## DISPOSAL OF USED ELECTRICAL AND ELECTRONIC EQUIPMENT



This symbol on products or original documents means that used electric or electronic products must not be added to ordinary municipal waste. For proper disposal and recycling, take these products to designated collection points. Or as an alternative in some European Union states or other European countries you may return your appliances to the local retailer when buying an equivalent new appliance. Correct disposal of this product helps save valuable natural resources and prevents damage to the environment caused by improper waste disposal. Ask your local authorities or collection facility for more details. In accordance with national regulations penalties may be imposed for the incorrect disposal of this type of waste.

### **For business entities in European Union states**

If you want to dispose of electric or electronic devices, ask your retailer or supplier for the necessary information.

### **Disposal in other countries outside the European Union**

This symbol is valid in the European Union. If you wish to dispose of this product, request the necessary information about the correct disposal method from the local council or from your vendor.



This appliance meets all the basic requirements of EU directives that apply to it.

Changes in the text, design and technical specifications may change without prior notice and we reserve the right to make these changes.