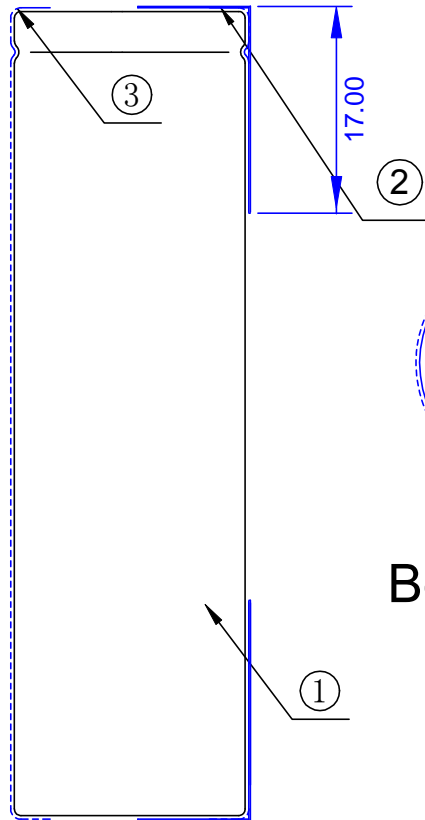
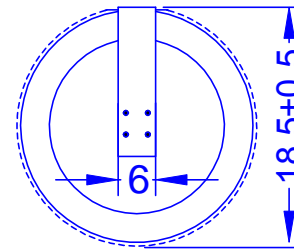


Front view



Side view



Bottom view

Electric Characteristic of the Battery

Normal capacity	2200mAh	Nominal voltage	3.7V
Internal resistance	45mΩ/cell	Weight (approx)	45g/cell

Charge at the constant current of 440mA till 4.2V , then charge at the constant voltage of 4.2V with end current of 44mA, rest 5 minutes after charge, then discharge at the constant current of 440mA, cut off at 2.75V the capacity shall not be less than 1760mAh after 500 cycles.

Electric characteristic	Capacity after 28days storage at 25 from complete charge.	Recovery capacity ≥70%
-------------------------	---	------------------------

Printing information	MCL 3.7V LCR18650 2200mAh <i>(For reference only)</i>	
----------------------	--	--

Note:
1. Please pay attention to the connector and the way of connection

	File name	DSE-LCR-LCR18650-2200-2P-CZ03-V18A		
	Specification	3.7V LCR18650-2200mAh		
Unit	mm	Revision	V18A	
Scale	1:1	Date	2018-06-19	
Sheet	1 of 1	Designed by	Motoma power / QE1	
Projection		Approved by	Motoma power /A	

4	Insulating tube	2	Black rubber	Diameter:4.5 Length:19(mm)
3	Sleeve for single battery	1	Blue color PVC	0.12mm(T)
2	Soldering plate	2	Steel plate coated nickel	6(W)x19(L)x0.12(T)(mm)
1	Battery	1	LCR18650-2200mAh	Φ18.5xH65(mm)(Max)
S/N	ITEM	QTY	SPECIFICATION	REMARK